

*Tilt-in-Space*

# RODEO



- **Customize**

Custom-built to your specifications to meet each individual's physical needs

- **Upholstery Colors**

Removable, washable Cordura available in various colors

- **5 Years of Growth Capabilities**

Size-adjustable frame extends chair life for a growing child

- **Dynamic Positioning**

Accommodates functional or rest positions and increased sitting tolerance for maximum comfort

- **Adjustable Recline**

Opens the seat-to-back angle to provide postural relief

### Transit



Meets or exceeds WC19 safety standards for safe transportation  
(optional)

### Adjustable Tilt



Provides pressure relief and upper body support

### Elevating Legrest



Provides adjustability for lower extremities

### Attendant Hand Brake



For increased safety and control  
(optional)

**Lightweight • Compact Folding • Convenient**

 **Convaid**  
*Now You're Going Places*



888-Convaid (266-8243)  
[www.convaid.com](http://www.convaid.com)

## Accessories



Headrest Cover  
(Canopy)



Upper Extremity  
Support Surface



Attendant  
Hand Brake



Oxygen Tank Bag



Heavy-Duty Under  
Storage Basket



Utility Bag

## Pelvis Positioning



3-Pt Positioning Belt  
with Depth Adjustable  
Crotch Strap  
(Transit Required)



Seat Cushions  
• Support  
• Position  
• Align

- Solid Seat Insert

## Upholstery Colors

Cordura



Black



Red



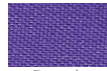
Blue



Pink



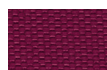
Nile Green



Purple



Forrest Green



Burgundy



Chocolate

## Foot & Leg Positioning



Medial Thigh Support  
(Abductor)



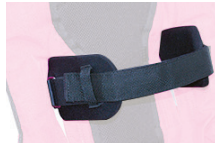
Lateral Thigh Support  
(Adductor)

- Foot Positioners (Transit Required)
- Legrest Extension 2"
- Calf Panel

## Trunk Positioning



H-Harness with  
Padded Covers  
(Transit Required)



Adj. Lateral Support



Full Torso Support Vest



Reducer Seat Insert

## Frame Options

- Adjustable Recline
- Height Adjustable Flip-up Armrests
- Side Panels (Solid or Mesh)

## Head Supports

- Occi Headwings
- Padded Headwings
- Headrest Extension (Transit Required)

## Tire Options

- 12.5" Rear Solid Knobby Tire
- 7.5" x 2" Front 12.5" Rear Pneumatic Knobby Tire

## Transit Options

- Q'Straint Transit Lap Belt
- Sure-Lok Transit Lap Belt
- Upper Extremity Support Surface (Foam Tray)

Measurement	Chair Model															
		Seat Width*	Overall Width	Overall Height	Overall Length	Seat Depth*	Seat Back Height	Seat to Footrest*	Footplate Adjustment Angle	Seat to floor	Recline Adjustment	Tilt Adjustment (from vertical)	Headrest Extension	Shoulder Strap Height	Weight Capacity Regular/Transit	Weight of Chair Δ
in.	RD 10	10	21	43	30.5	7 - 12	21	9 - 14	±20°	20	0°, 20°	5°, 45°	6	13 - 19	75 / 66 lbs	29 lbs
cm	RD 10	25.5	53	109	77.5	17.8 - 30.5	53.3	23 - 35.6		51			15	33 - 48.3	34 / 30 kg	13.2 kg
in.	RD 12	12	23	43	35	9 - 14	22	9 - 14	±20°	21	0°, 20°	5°, 45°	8	15 - 21	75 / 66 lbs	33 lbs
cm	RD 12	30.5	58.5	109	89	22.9 - 35.6	56	23 - 35.6		53			20	38 - 53.3	34 / 30 kg	15 kg
in.	RD 14	14	25	44	35	11 - 16	24	11 - 16	±20°	22	0°, 20°	5°, 45°	8	16 - 22	100 / 100 lbs	37 lbs
cm	RD 14	35.5	63.5	112	89	27.9 - 40.6	61	28 - 40.6		56			20	40.6 - 56	45.5 / 45.5 kg	16.8 kg
in.	RD 16	16	27	45	36	13 - 18	25	12 - 18	±20°	22	0°, 20°	5°, 45°	8	18 - 24	170 / 140 lbs	39 lbs
cm	RD 16	40.5	68.5	114	91.5	33 - 45.7	63.5	30.5 - 45.7		56			20	45.7 - 61	77 / 63.6 kg	17.7 kg

in. - Inch, cm - Centimeter \* Plus or Minus .5 inches (1.27 cm) due to fabric. Δ- Weight of chair is without front rigging

Use only Convoid options and parts on Convoid products. Convoid parts are not interchangeable with other manufacturer's products. Replace any worn parts immediately. Note: Convoid maintains a policy of continual product improvement; therefore, we reserve the right to make changes without notice.